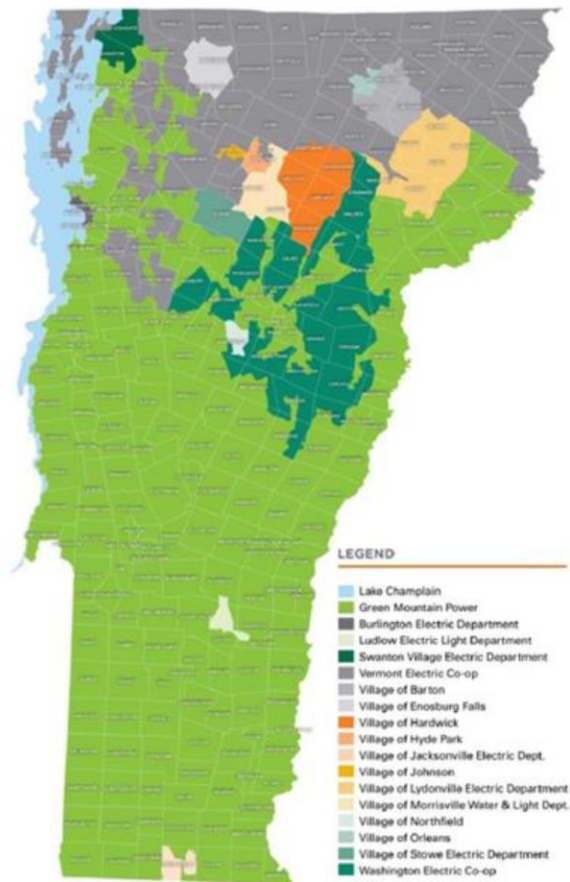




# Thermal/Buildings Sector Presentations

Clean, Reliable, Resilient: Electrifying Vermont |  
Maddy Murray-Clasen, Green Mountain Power

# Green Mountain Power: Who We Are



- ▶ GMP serves 275,000 customers, covering 77% of Vermont
  - ▶ 85% residential customers, 15% businesses
  - ▶ 12,500 miles of distribution lines
  - ▶ 1,011 miles of sub-transmission
  - ▶ 15 district offices with teams across Vermont
  - ▶ About 510 employees, 285 are members of the IBEW Local 300
  - ▶ Annual energy mix is 100% carbon free, 80% renewable
  - ▶ Will be 100% renewable by 2030
  - ▶ Certified B Corp



# Clean, Reliable, Resilient: Helping Vermont Electrify

## Top sources of carbon pollution in VT

- ▶ Heating
- ▶ Transportation

## Climate change is accelerating extreme weather

- ▶ Past 12 months
  - 18 storms = outages for 700,000 GMP customers

## Partnering with customers on resiliency

- ▶ Strengthening the grid so customers can choose clean electrification and stay safe and connected



# GMP: Cutting Carbon and Costs for All Customers



## New programs supported by federal funding help income-qualified customers electrify

- ▶ Energy Storage Access Program (\$1.5M ARPA)
  - ▶ Home battery back up
- ▶ Home Electrical System Upgrades (\$10M ARPA)
  - ▶ 200 amp panel and service upgrades
- ▶ GMP Energy Transformation Line Extension Tariff